

FlashVent™

EASYFLAPPER™ EXHAUST VENT

PVC Low Slope Systems

OVERVIEW

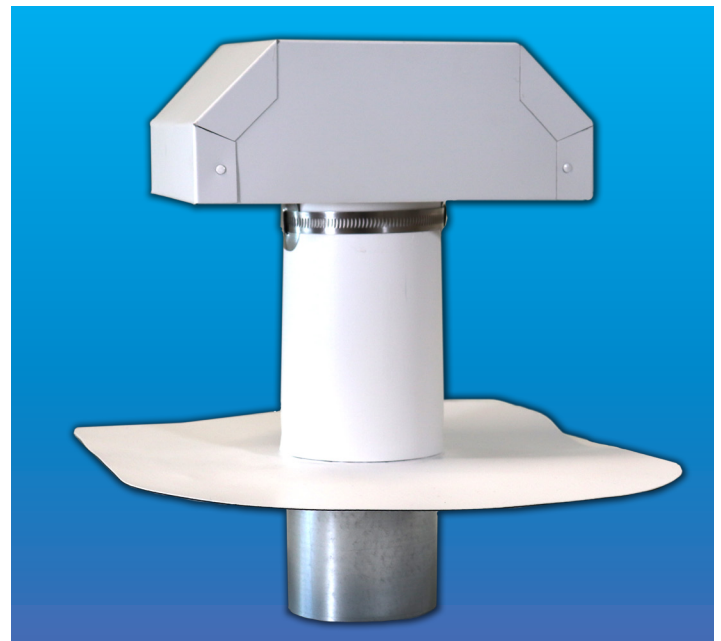
FlashCo's FlashVent PVC EasyFlapper is a rooftop exhaust vent equipped with hinged baffles and screen. (Screens can be removed to prevent debris build up in dryer applications). The sub base and hood are installed separately to accommodate the 60 mil reinforced PVC flashing. The sub base meets the minimum 8" height requirement for most commercial low slope roofing systems. Hoods are available in a range of colors to better match the color of the PVC membrane. FlashCo's EasyFlapper vents are available in 4 standard sizes: 4", 6", 8" and 10" diameter. **Custom sizes, colors, and configurations are available on request.**

APPLICATION

The EasyFlapper is commonly used for exhaust ventilation and comes equipped with a stem for a positive connection to ducting below the roof substrate. This product is specifically intended for use on PVC low slope roofing systems for powered fan ventilation such as the bathroom, dryer and kitchen areas. Not intended for heated exhaust such as furnaces and chimneys.

INSTALLATION

1. Insert short side of sub-base stem into vent opening in roof substrate.
2. Attach sub-base flange to roof substrate using fasteners.
3. From below the roof deck, connect vent ducting to sub-base stem using hose clamp or HVAC tape (provided by others).
4. From above the roof deck, place PVC flashing over 8" tall portion of sub-base.
5. Completely weld PVC flange to existing field membrane.
6. Place hood and hinged baffle assembly over the flashing and stem.
7. Tighten collar until hood is secure. Omit screen inserts if used in a dryer vent application to help prevent debris build-up.



FEATURES AND BENEFITS

- 3-piece design is fast and easy to install
- 8" height meets or exceeds most low-slope PVC system requirements
- Hoods available in a range of colors to match the PVC system color
- Baffles and gaskets reduce cold air intrusion, condensation, and noise

SAVING THE CONTRACTOR TIME

- **FlashCo's Brand Promise is Speed:** shipping 90% of orders within 3 days.
- 24/7/365 Online Contractor Portal and additional time-saving tools
- Most orders delivered on FlashCo's own delivery trucks
- Get off the roof sooner



FlashVent™ EASYFLAPPER™ EXHAUST VENT

STANDARD SIZES, PACKAGING, MATERIALS & COLORS							
Description	Qty/Box	Wt./Box	Box Size	Hood Material	Flashing Material	Hood Colors	Flashing Colors
4" EasyFlapper Vent	6 ea.	33 lbs.	24"x24"x20"	26 Ga. Painted Steel	60 mil Reinforced PVC	White Gray Tan Dark Gray Brown	White
6" EasyFlapper Vent	4 ea.	30 lbs.	24"x24"x20"	26 Ga. Painted Steel	60 mil Reinforced PVC		Gray
8" EasyFlapper Vent	2 ea.	20 lbs.	24"x24"x20"	26 Ga. Painted Steel	60 mil Reinforced PVC		Tan
10" EasyFlapper Vent	1 ea.	10 lbs.	24"x24"x20"	26 Ga. Painted Steel	60 mil Reinforced PVC		Dark Gray
							Dark Bronze

Also available in custom sizes & colors

EasyFlapper Exhaust Vent

