



# COATED METALS GROUP

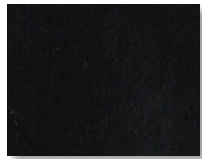
## Color Selection Guide



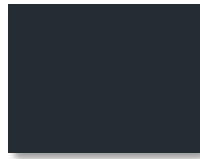
**CHICAGO METAL SUPPLY**  
and fabrication, inc.  
"For a Timeless look" (773) 227-6200

Cool coating with premium heat-reflective technology from Dura Coat.  
KYNAR 500® or HYLAR 5000® Pre-Finished Steel & Aluminum Flat Sheets & Coil.

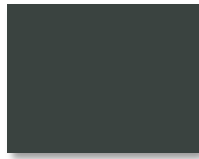
\*Premium Color



Deep Black



Matte Black



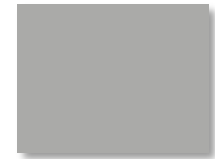
Charcoal Gray



Musket Gray



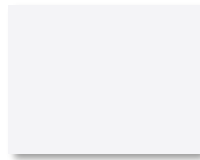
Slate Gray



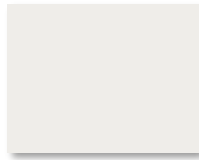
Ash Gray



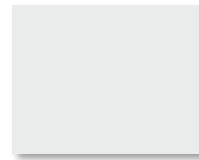
Almond



Bright White



Bone White



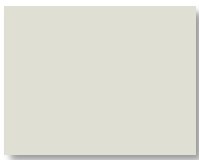
Stone White



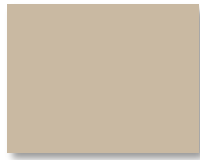
Cityscape



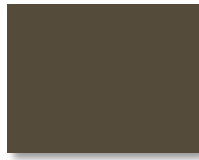
Extra Dark Bronze



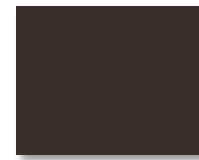
Sandstone



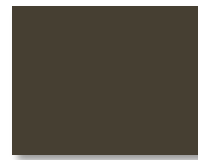
Sierra Tan



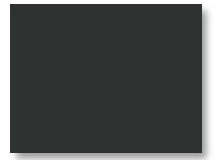
Medium Bronze



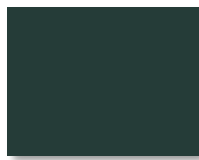
Mansard Brown



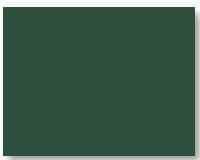
Burnished Slate



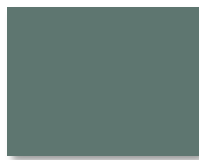
Dark Bronze



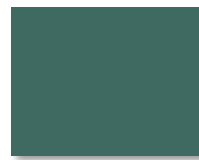
Hartford Green



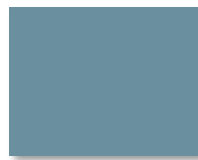
Classic Green



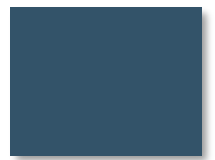
Hemlock Green



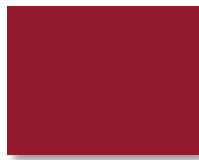
Teal



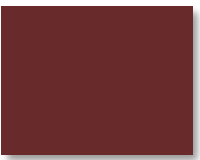
Slate Blue



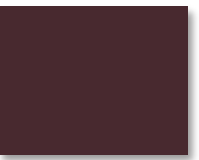
Royal Blue



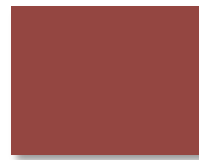
Regal Red



Colonial Red



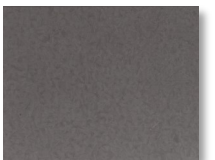
Burgundy



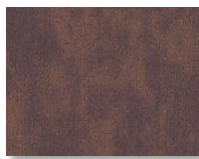
Terra Cotta



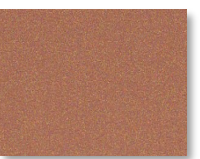
Galvalume Plus



\* Vintage



\* Western Rust



\* Copper Penny



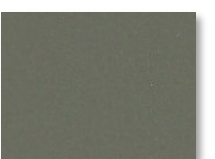
\* Weathered Zinc



\* Silver



\* Champagne



\* Aged Copper

Denver, CO  
Indianapolis, IN  
Madison, WI  
Minneapolis, MN



Phoenix, AZ  
Salt Lake City, UT  
Nashville, TN  
Charlotte, NC



## Stock Availability Matrix

Color Name	ULTRA-COOL RATINGS			G90 Galvanized/AZ50 Galvalume								
	Reflect	Emiss	SRI	22 ga.		24 ga.		26 ga.		26 ga. 3D		28 ga.
				48"	40"	48"	40"	48"	40"	48"	42"	
Acrylic Coated Galvalume	N/A	N/A	N/A	•	•	•	•	•			•	
Aged Copper	26.8%	0.85	26		•	•						
Almond	61.4%	0.83	72	•	•	•		•			•	
Antique Ivory	N/A	N/A	N/A					•			•	
Ash Gray	49.8%	0.85	56			•		•				
Bone White	67.6%	0.84	81	•	•	•		•			•	
Bright White	67.8%	0.84	81			•						
Burgundy	27.1%	0.85	26		•	•	•	•	•	•		
Burnished Slate	25.1%	0.83	33		•	•	•	•	•	•		
Champagne	47.2%	0.80	51			•						
Charcoal Gray	25.3%	0.84	23	•	•	•	•	•	•	•	•	
Cityscape	45.2%	0.87	51			•						
Classic Green	30.5%	0.85	30		•	•	•	•	•	•	•	
Colonial Red	33.2%	0.86	35		•	•	•	•	•	•	•	
Copper Penny	43.9%	0.84	48		•	•		•				
Dark Bronze	27.7%	0.85	27	•	•	•	•	•	•	•	•	
Deep Black	26.7%	0.84	25	•	•	•	•	•			•	
Extra Dark Bronze	N/A	N/A	N/A		•	•						
Hartford Green	27.1%	0.83	25	•	•	•	•	•	•	•	•	
Hemlock Green	31.1%	0.85	31		•	•						
Mansard Brown	26.0%	0.85	25	•	•	•	•	•	•	•	•	
Matte Black	26.8%	0.84	25	•	•	•	•	•	•	•	•	
Medium Bronze	30.9%	0.86	31	•	•	•	•	•	•	•	•	
Musket Gray	34.8%	0.83	35		•	•	•	•	•	•		
Pebble Clay	43.4%	0.84	47					•			•	
Regal Red	38.5%	0.85	41			•		•				
Royal Blue	26.8%	0.85	26		•	•		•				
Sandstone	59.7%	0.82	69	•		•						
Sierra Tan	45.8%	0.83	50	•	•	•		•	•	•	•	
Silver	55.6%	0.81	63		•	•						
Slate Blue	32.8%	0.84	33		•	•		•			•	
Slate Gray	37.5%	0.82	38	•	•	•	•	•	•	•	•	
Stone White	65.6%	0.82	77			•						
Teal	27.9%	0.85	27		•	•						
Terra Cotta	41.9%	0.83	45			•		•	•	•		
Vintage	30.0%	0.70	22		•	•						
Weathered Zinc	38.3%	0.85	41		•	•						
Western Rust	24.0%	0.87	23		•	•						

Oil canning is an inherent part of light gauge cold formed metal products and is not cause for coil, sheet or panel rejection. Protective film must be removed immediately after installation. Colors and sizes can change without notice. Additional sizes may be available, please contact your sales representative. Please contact our office for maintenance and cleaning procedures.

**Product Description**

Ultra-Clad pre-finished metal features Dura Coat Durapon 70% full strength PVDF paint finishes formulated with Cool technology. This high performance product provides the ultimate in resistance against fading and weathering. In addition to our standard colors, custom colors are also available up request.

**Color Samples**

Colors shown represent the actual colors as accurate as modern printing technology will permit. Colors represented on electronic charts may not match actual material. All colors should be verified using actual metal samples. Mismatch of electronic color representation and actual material shall not be accepted as a cause for rejection. Free metal samples are available upon request.



KYNAR 500 is a registered trademark of ELF Atochem North America, Inc.  
 HYLAR 5000 is a registered trademark of Ausimont USA, Inc.  
 GALVALUME is registered trademark of BIEC.